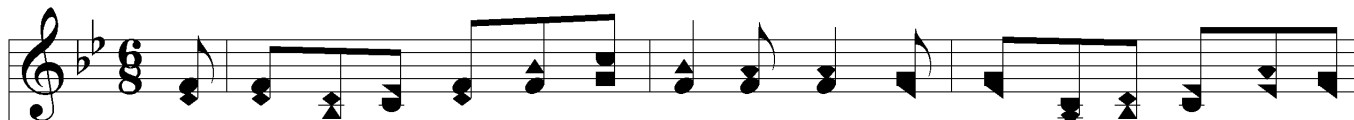
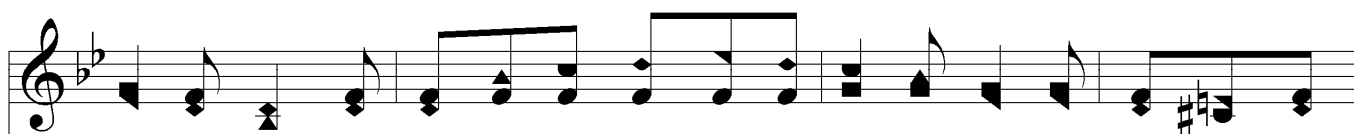
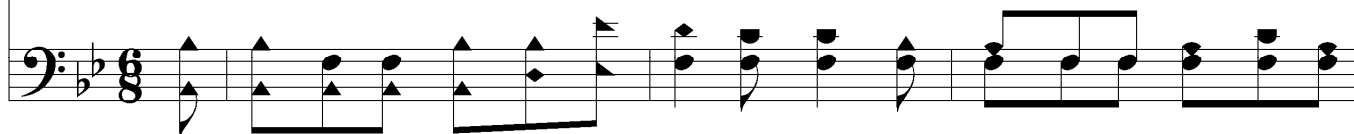


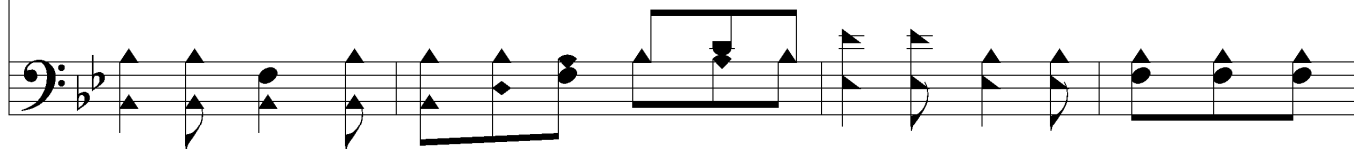
# As Panteth The Hart



1. As pant-eth the hart in the sul-try glade, When chased from the brook and the  
 2. My tears are my sus-tenance night and day, And where is thy God? they of-  
 3. Why art thou dis-qui-et-ed, O my soul? My life shall the mer-cies of  
 4. My soul, O my God, have my foes cast down, Yet once were Thy peo-ple held  
 5. Yet kind-ness and love will the Lord com-mand, And songs in the night in an  
 6. The sword of my foes seeks my soul to slay, And where is thy God? hear the



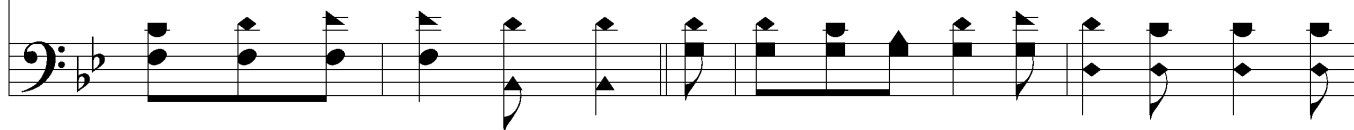
cool-ing shade; So, far from Thy courts in cap-tiv-i-ty, My soul is a-  
 fend-ing say; Then well I re-mem-ber the for-mer days, With mul-ti-tudes  
 God con-trol; Yet Him will I praise, while my years pro-long, The help of whose  
 in re-nown; Deep an-swers, too deep when the thun-ders roar, So bil-lows their  
 al-ien land; Then why do I cry, hath my God for-got? Why mourn that op-  
 scoff-ers say; Yet Him will I praise, while my years pro-long, The help of whose



## Chorus



thirst, O my God, for Thee.  
 throng-ing the house of praise.  
 coun-tenance is my song. As pant-eth the hart for wa-ter brooks, so  
 tor-rents up on me pour.  
 pres-sion is now my lot?  
 coun-tenance is my song.



# *As Panteth The Hart*

The image shows a musical score for the hymn 'As Panteth The Hart'. It consists of two systems of music, each with a vocal line and a bass line. The key signature is one flat (B-flat), and the time signature is 4/4. The first system contains the lyrics 'pant - eth my soul for Thee; My soul is a - thirst,'. The second system contains the lyrics 'My soul is a - thirst, Thy lov - ing face to see.' The second system includes a 'Rit...' marking above the vocal line. The score uses standard musical notation including treble and bass clefs, stems, beams, and various note values.

pant - eth my soul for Thee; My soul is a - thirst,

*Rit...*

My soul is a - thirst, Thy lov - ing face to see.