

# Behind The Clouds



1. If a cloud should come be-tween us And the splen - dor of the sun,  
 2. If we hold to wrong o - pin - ions Till they form a might - y wall,  
 3. Al - tho' pain and sin and sor - row Seem to dark - en earth - ly days,



If the rays of gold - en sun - light Should be hid - den one by one,  
 If we har - bor thoughts of er - ror, And for - get that God is all,  
 We may learn a sim - ple les - son From the sun's ob - struct - ed rays,

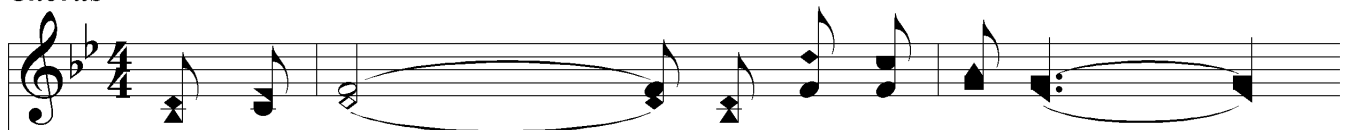


If a - cross the stream and mead - ow Sud - den - ly a dark - ness came,  
 If we live in mor - tal dark - ness, Are we not our selves to blame.  
 And tho' life it - self seems cloud - ed With the dark - ness of de - spair.

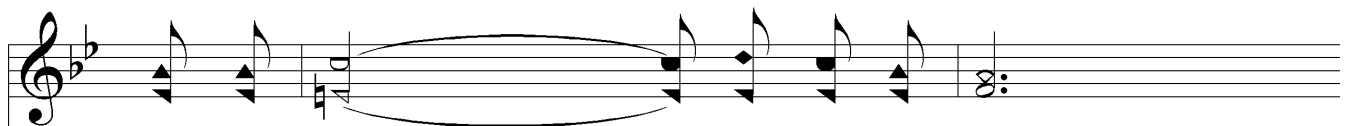


Should we ques - tion for a mo - ment That the sun shone just the same?  
 Since God's truth be - yond the shad - ow Shines in splen - dor just the same?  
 Just re - mem - ber that the shad - ow Proves the light is al - ways there.

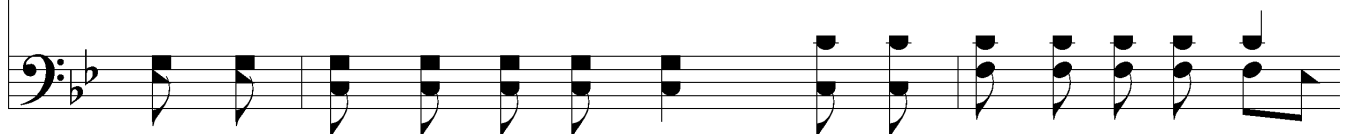
## Chorus



And tho' life it - self seems cloud-ed,  
 And tho' life it - self seems cloud-ed, And tho' life it - self seems cloud-ed,



With the dark - ness of de - spair,  
 With the dark - ness of de - spair, With the dark - ness of de - spair,



# Behind The Clouds

Just re - mem - ber that the shad - ow  
Just re - mem - ber that the shad - ow, Just re - mem - ber that the shad - ow

Proves the light is al - ways there.  
Proves the light is al - ways there, Proves the light is al - ways there.

The image shows a musical score for the hymn 'Behind The Clouds'. It consists of two systems of music. Each system has a vocal line (treble clef) and a piano accompaniment line (bass clef). The key signature is one flat (B-flat major or D minor). The first system contains the first two lines of lyrics. The second system contains the final two lines of lyrics. The piano accompaniment features a steady eighth-note bass line and chords in the right hand.